



ENSTA



VIVATECH

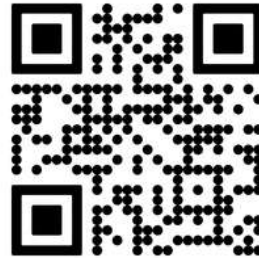
17-20 JUNE 2026 / PARIS



***27 startups of
Institut Polytechnique de Paris
VivaTech 2026***

ip-paris.fr

Know more about IP Paris Incubators



ARKANE

Advanced AI-driven communication systems for critical operations

Arkane develops embedded AI software across two domains: IoT protocols for wireless sensing and structural health monitoring, and AI-based signal processing for defence and aerospace systems. In both cases, the company's distinctive strength lies in mastering the complete deep learning pipeline; from data acquisition and model design through training, compression and explainability, to operational deployment on embedded hardware under real-world SWaP and latency constraints.

IA, Aerospace, Defense and Industry 4.0, Deeptech

 [arkane-tech.fr](https://www.arkane-tech.fr)

 <https://www.linkedin.com/company/arkane-tech/>

 aurelia.mauvillain@arkane-tech.fr





CLOUD VGP

Know what's due. Prove what's done

Cloud VGP is an AI-powered compliance software that tells you what to inspect, when it's due, and proves it's done. Built for QHSE teams, fleet and equipment managers and inspection services. It manages the full compliance lifecycle: scheduling, inspections, certifications, non-conformity resolution, and audit-ready traceability. No more spreadsheets, no more missed deadlines, no more audit surprises. Trusted by Saint-Gobain, VINCI and John Cockerill.

ConTech, Industry, PropTech and Smart City

 <https://cloud-vgp.fr/>

 <https://www.linkedin.com/company/cloud-vgp>

 r.halabi@cloud-vgp.com

DRAFT&GOAL

Automate growth with agentic AI

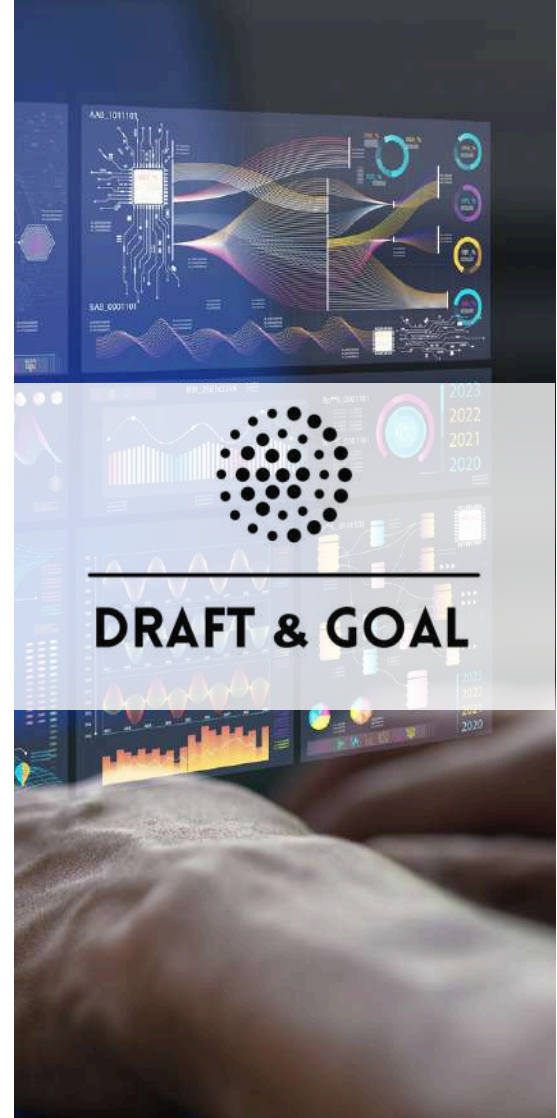
Draft&Goal is an AI-powered platform that automates marketing processes through agentic workflows. It helps teams streamline research, SEO, content, campaign execution, and performance optimization by coordinating AI agents across existing tools and data sources. Enterprises use Draft&Goal to move faster, cut operational costs, and scale marketing with more consistency, turning complex workflows into automated runs so teams can focus on strategy.

AI, MarTech, Deeptech

 <https://dng.ai>

 <https://www.linkedin.com/company/draft-goal/>

 nabil@dng.ai, info@dng.ai



GREEN-GRAPH

Make european supply chains both low-impact and highly competitive

Green-Graph is a SaaS platform helping industrial and public organizations optimize supply-chain performance, resilience, and environmental impact. Our solution combines supply-chain mapping, risk monitoring, responsible procurement, Life Cycle Assessment (LCA), and carbon footprint management in a single platform. We help companies reduce disruptions, improve sourcing decisions, comply with ESG regulations, and accelerate decarbonization across Scope 3 emissions.



GreenTech

 <https://www.green-graph.com/>

 www.linkedin.com/in/philippe-garrigue-green

 garrigue.ph@green-loom.com

HEDI

Power your teams to spot new-gen fraud

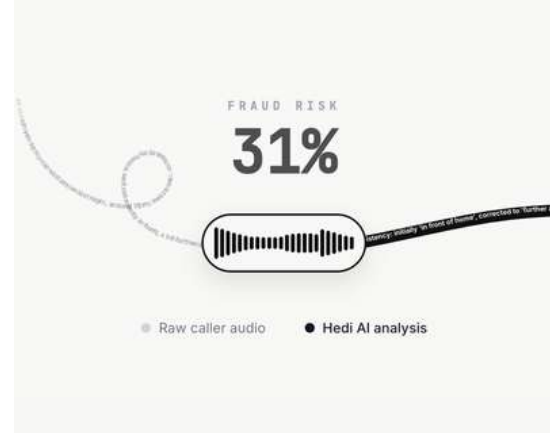
Hedi automates insurance fraud investigation with AI agents that handle everything from document processing to verification calls.

Insurance, AI, Agentic AI, Fraud, Deeptech

🌐 www.askhedi.com

🌐 <https://www.linkedin.com/company/askhedi/>

✉️ roxana.rotaru@askhedi.com




JOVYAN AI

Help businesses unlock full potential of their proprietary data with machine learning

Jovyan is an AI system to build machine learning applications. With Jovyan AI, teams build new projects in days instead of months, then iterate 10x faster to maximize business value.

Jovyan AI also streamlines information sharing: stakeholders get the right level of details, machine learning teams get the right feedback at the right time.

Last but not least, Jovyan AI captures the business and technical context into a reusable knowledge base, turning ML execution into a compounding business advantage.



Jovyan AI

AI, Technology, Data, ML

 <https://jovyan-ai.com>

 <https://www.linkedin.com/company/jovyan-ai/>

 contact@jovyan-ai.com

LABEL4.AI

Neutralizing deepfakes & manipulated content

Label4.ai is a French deeptech building anti-fraud AI that detects anomalies in synthetic and manipulated content: deepfakes, document fraud, AI-generated audio and video. Co-founded with researchers from Inria and CNRS, we combine forensic detection with audio-visual watermarking to help enterprises and institutions distinguish authentic content from manipulated. Twice awarded at Forum InCyber 2026 (Prix de la Recherche + Coup de cœur du jury).

AI, Cybersecurity, Deeptech, Trust & Safety

 <https://label4.ai>

 <https://www.linkedin.com/company/label4-ai/>

 contact@label4.ai





LOULOU ACADEMY

Transform screen time into school success

Loulou Academy transforms children's screen time into school success. Our adaptive learning engine uses AI and neuroscience to personalize each child's learning in real time. Based on school programs, the app uses smart games to engage every child in their lessons. Already used by 30,000+ families across 174 countries, Loulou turns screen time into measurable academic progress.

EdTech, Deeptech, AI, Gaming

🌐 <https://www.loulouacademy.com/>

🌐 <https://www.linkedin.com/company/loulou-academy/>

✉️ driss@loulouacademy.com, academyloulou@gmail.com



LPRINT

Industrial PCB printing, made local

Lprint develops industrial PCB printing systems for strategic industries. We reduce supply chain dependence, accelerate hardware development, and enable PCB designs that traditional manufacturing cannot produce. Our proprietary laser-assisted process enables fast, local, and secure production of advanced printed circuit boards directly on-site. Developed at INRIA.

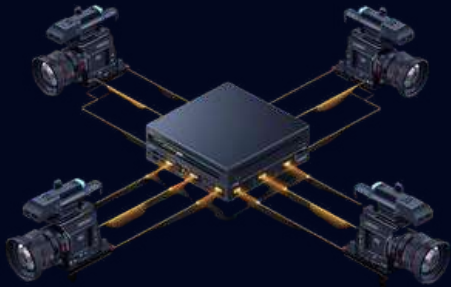
Sovereignty, Industry, GreenTech, Electronics

 <https://lprint.io/en/home>

 <https://www.linkedin.com/company/lprintpcb/>

 hello@lprint.io





MVEO

One Production. Every Format

Mveo is an AI that turns linear video production into native multi-format production. Our server plugs into existing setups, where our AI controls cameras, selects the best angles, and adds graphics in real time.

Unlike simple social media crops, Mveo uses a larger frame than the TV feed across all cameras to deliver the best vertical viewing experience.

We help broadcasters and events reach and renew audiences with a native mobile live experience, without additional teams.

AI, Media, Robotics, Software

🌐 <https://mveo.ai>

🌐 <https://www.linkedin.com/company/mveo>

✉️ pierre@mveo.ai

MYBUBBLEHEALTH

Bbskope: First AI-powered pediatric monitoring

MyBubbleHealth is a French deeptech MedTech company developing Bbskope, the first AI-driven pediatric software that transforms any camera into a contactless baby vital signs monitoring system, delivering real-time medical-grade insights. Designed for seamless use across clinical and home care settings, it enables sensor-free instant monitoring anywhere, anytime, improving accuracy and comfort.

HealthTech, AI, Deeptech

🌐 <https://mybubblehealth.com>

🌐 <https://www.linkedin.com/company/my-bubble-health/>

✉️ ceo@mybubblehealth.com



OSBORNE SYSTEMS


Rethinking how industrial systems are designed

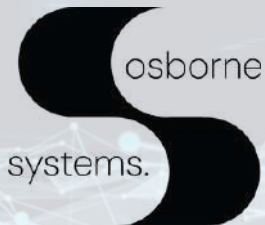
Osborne Systems is a deeptech software company digitizing the design of industrial metering systems: the critical infrastructure measuring fluid flows across energy networks. Osborne Flow, our AI-powered platform, cuts design time from 8-10 weeks to 10 minutes, from data input to production-ready reports. We serve engineering firms, starting with oil & gas, with applications extending to hydrogen, CO₂, water and broader industrial systems. SaaS + usage-based model.

Industry 4.0, GreenTech, AI, Deeptech

 <https://www.osborne-systems.com>

 <https://www.linkedin.com/company/osborne-systems/>

 marie.feroux@osborne-systems.com
camille.daquo@osborne-systems.com
pierre.feroux@osborne-systems.com



PLANOR

Back to training. We handle the admin

France has over 157,000 training organizations, the vast majority of which are small businesses overwhelmed by administrative work and Qualiopi requirements (the mandatory French training quality certification). Planor automates the entire administrative workflow of a training organization, from document generation to evaluation tracking and compliance monitoring. We serve independent trainers and training organizations of 1 to 50 people in France, saving them more than 10 hours per week.

EdTech, SaaS, RegTech

 <https://www.planor.fr>

 <https://www.linkedin.com/company/planor-fr/>

 esteban.antonio-mota@planor.fr



 **PLANOR**

PRAEDON

Predict. Decide. Succeed.

Praedon harnesses the power of AI and Operations Research. The company was born from world-class academic labs to solve complex industrial optimization problems that were previously out of reach. By combining machine learning with mathematical optimization, Praedon helps large companies make smarter decisions under uncertainty. With a technology already deployed at Renault (saving €1M/year and cutting CO₂ by 10%), Praedon turns cutting-edge research into real industrial impact.

Deeptech, AI, Operations Research

 www.praedon.com

 <https://www.linkedin.com/company/praedon/>

 contact@praedon.com



Praedon

RADIANT

Carbon-free and cost-efficient heat for industrial processes

Radiant develops Belenos, a concentrated solar heat solution delivering industrial process heat between 200°C and 1,000°C. A decarbonized alternative to gas in industry, Belenos targets manufacturers in construction materials, metallurgy, and chemicals.

GreenTech, Energy, Industry, DeepTech

 <https://www.radiant-energy.eu/en>

 <https://www.linkedin.com/company/radiant-energy-eu>

 thomas.delhon@radiant-energy.eu





RENODIT

Add a new dimension to your renovation studies

Renodit empowers building professionals to turn a simple address into a 3D model of an existing residential property, and simulate the optimal energy renovation plan in minutes, saving 75% of time and boosting conversion rates by 30%.

GreenTech, PropTech, Energy, Deeptech

 <https://renodit.fr/>

 <https://www.linkedin.com/company/renodit>

 benoit.charrier@renodit.fr

SHIFTELEC

Don't let electricity bills get the better of you

Shiftelec is a French DeepTech startup specializing in electricity flexibility for plants. Using our AI-powered virtual sensors, developed in partnership with the Institut Polytechnique de Paris, Shiftelec enables industrial sites to measure their electricity consumption on a machine-level, without the need for heavy infrastructure or production downtime. Our solution helps plant managers understand, optimize, and monetize their electricity consumption: up to 20% of their bill in revenue.

GreenTech, Deeptech, Energy, Industry

 www.shiftelec.com

 <https://www.linkedin.com/company/shiftelec/>

 contact@shiftelec.com



SMALK AI

Smalk AI boost brand mentions in AI search engines with ads for agents

Small AI is the one-stop ad network that connects brands and agencies to thousands of AI-sourced websites through a single platform, helping them boost their presence in AI answers in ChatGPT, Perplexity, AI Mode... while creating incremental revenue for publishers.

We are powering the Generative Engine Advertising (GEA).

AdTech, MarTech, Deeptech

 <https://www.smalk.ai>

 <https://www.linkedin.com/company/smalk-ai/>

 k.moisan@smalk.ai



SONAID

Giving machines the sense of hearing to save lives

Sonaïd is a B2B software for hardware manufacturers: Safety, Silver Economy, Lone Workers, Security. Our embedded AI sound detection transforms existing devices into active safety solutions. We identify emergencies in constrained and noisy environments, from detecting distress and pain in a lone worker's voice to identifying falls in elderly care or mechanical anomalies on a production line.

***AI, Manufacturing, Safety, HealthTech,
Deeptech***

 <https://www.sonaïd.ai>

 <https://www.linkedin.com/in/turpaultnicolas/>

 nicolas.turpault@sonaïd.ai
helene.jaffrelot@sonaïd.ai





SYNTROPICS

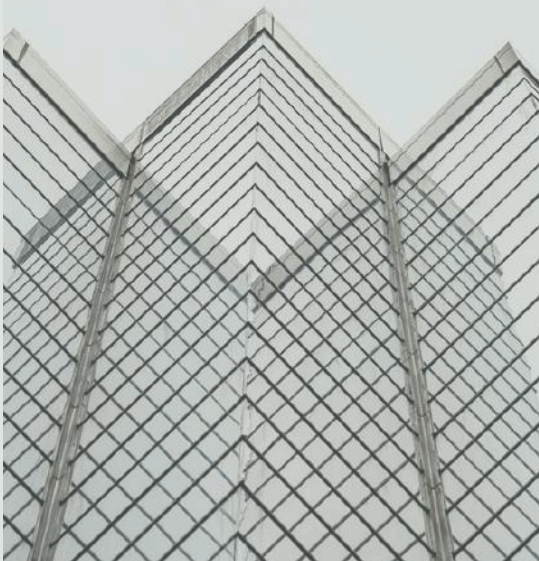
The proactive AI assistant built for real estate

Syntropics is an AI assistant built for real estate asset management. It structures every lease, valuation, and report into a living data layer, and handles the daily admin workflow. Continuously learning from your emails and documents, it anticipates needs before they are expressed. No manual input required. Live in under an hour. Built for boutique and mid-market European managers.

Real Estate, AI, PropTech

 syntropics.io

 danny@syntropics.io



T-LIFE

Pioneering the future of digital cell diagnosis

Precision AI: Transforming Haematology. T-life leads the shift to microscopy-based digital diagnosis. By creating Digital Twins of blood cells, we turn microscopy into a high-throughput predictive engine.

- Digital Twins: High-fidelity cellular mapping for total clarity;
- Precision Prognosis: Accuracy beyond manual limits;
- Scalable AI: Built for high-volume modern labs;
- Predictive Medicine: Data-driven therapy for complex disease.

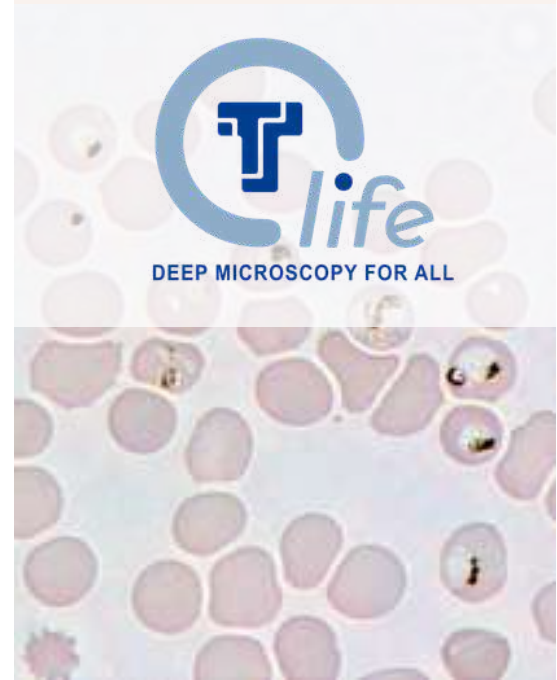
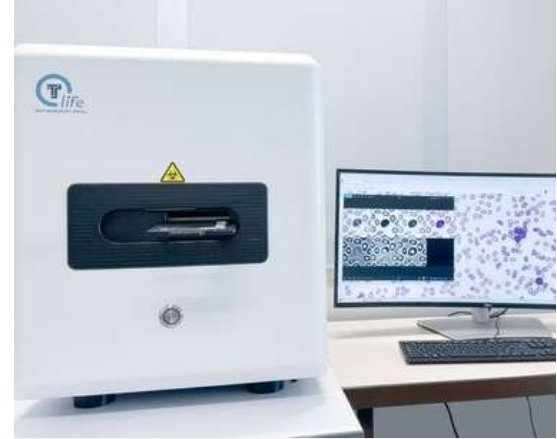
Revolutionizing blood diagnosis from the cell up.

***HealthTech, Microscopy Imagery, In Vitro
Medical Device, AI, Deeptech***

🌐 <https://t-life.io/>

🌐 <https://www.linkedin.com/company/t-life/>

✉️ jklossa@t-life.io



TAMTAM AI

Making B2B cold outreach feel warm

Tamtam AI builds your perfect lead list, using unique buying signals from past won deals and all the context your reps need to get a meeting.

- Surfaces exactly what triggered your past deals
- Researches accounts even better than your best rep
- Drafts timely and meaningful messaging
- Finds verified phone numbers and emails

Full pipelines start with Tamtam AI. Visit tamtam.ai to see how we help 45+ sales teams at companies like Akeneo, Wolters Kluwer and WMH Project Groupe 3x their pipeline generation.

AI, SaaS, Sales Tech, B2B

 <https://tamtam.ai>

 <https://www.linkedin.com/company/tamtam-ai>

 elodie.deleglise@tamtam.ai



TINENTAL

Up to 60% less energy, same production output

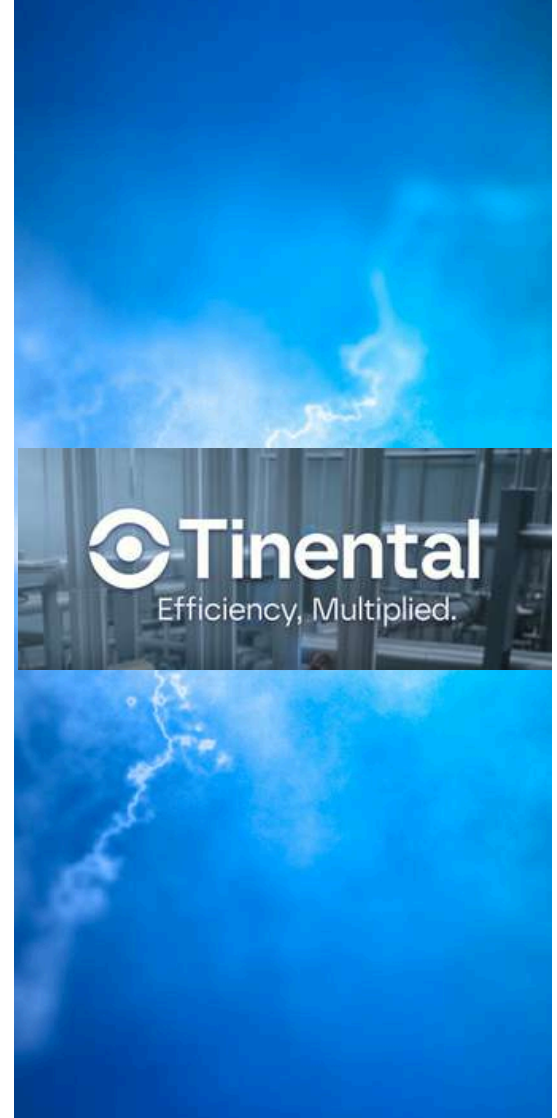
Tinental's flagship product, Caleno Energy, optimizes pumping systems in real time, using proprietary AI and IoT, unlocking cost savings at scale. Caleno automates the working set point of any existing machinery, new or old, achieving up to 60% energy savings and reductions in CO₂ emissions while maintaining the same production output. This is a game changer, as pumps are responsible for between 20% and 50% of the electric consumption in many industries and large buildings. At scale, this has significant implications for the climate and for European industrial competitiveness.

***GreenTech, Energy, Smart Manufacturing,
Smart Building, Deeptech***

 <https://www.tinental.com>

 <https://www.linkedin.com/company/tinental/>

 info@tinental.com





VAIR

Ultra-fast breath diagnostics for frontline care

Vair is reinventing respiratory diagnostics with the first handheld breathalyser that identifies common respiratory infections from a single breath in 3 minutes: no swab, no lab, no waiting. Today, central-lab PCR takes hours and rapid antigen tests miss up to 1 in 3 cases. We bring lab-grade accuracy directly to GPs and emergency rooms, where decisions on isolation, treatment and admission are made.

MedTech, Deeptech

 <https://www.vair.dev>

 <https://www.linkedin.com/company/vair-biotech/>

 kukhtenko@vair.dev



VAIR

VENTURIX

Venturix produces a flying and floating wind turbine

We sell wind turbines to energy companies. Our turbine is better because it is cheaper, easily built and deployable faster. Indeed we reduce the CAPEX of a floating wind turbine by suppressing the mast and the tilting moment of the machine. This way, the floater is reduced by 90%. And the floater is 50% of CAPEX. In exchange we have a more complex flying machine to set up.

Renewable Energy, Deeptech

🌐 www.venturix.bzh (in construction)

✉ g.desrocques@venturix.bzh





VNEXIA

We develop technologies to keep people safe

Vnexia is a portable deep-tech solution built to improve safety on worksites. It allows you to quickly deploy a live monitoring and proactive risk prevention system without relying on fixed infrastructure, making it flexible and easy to use on worksites. Vnexia combines cameras, sensors, and embedded AI to identify unsafe situations and alert workers before incidents happen ; with real-time monitoring configurations such as counting people and vehicles, detecting people beneath suspended loads.

ConTech, Physical AI, Deeptech

 <https://vnexia.com>

 <https://www.linkedin.com/company/vnexiasafety/>

 sebastien.noireau@vnexia.com

WE.DEPLOY(SCIENCE)

Embedded modeling for complex mechanical systems

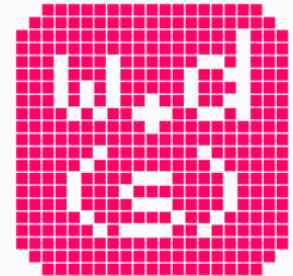
We.deploy (science) builds embedded intelligence for mechanical systems in open environments, where sea and wind challenge design and operation alike. Our living modeling stack (physics, estimators, MPC) runs across a continuum: Hardware-in-the-Loop co-design upstream with low and high-fidelity modeling; embedded software downstream with sensor fusion for safe, optimal control. Data loops back continuously to refine the model. Markets: maritime, defense (USV/AUV), aviation.

Maritime, Defense, Deeptech, Embedded Systems

 <https://we.deploy.science>

 <https://www.linkedin.com/company/we-deploy-science>

 contact@deploy.science





**INSTITUT
POLYTECHNIQUE
DE PARIS**



ENST2



ENSAE



ip-paris.fr